



EAN:	4013288032065	Size:	260x210x55 mm
Part number:	05118156001	Weight:	235 g
Article number:	2052/6	Country of origin:	CZ
		Customs tariff number:	82054000

- Kraftform Micro screwdriver with ballpoint for hexagon socket screws
- Multi-component Kraftform Micro handle with anti-roll feature and swivel cap
- The Wera Black Point tip offers an exact fit and optimum corrosion protection
- Ballpoint for dependable working even in difficult installation situations
- E.g. for electricians, opticians, precision mechanics, jewellers or IT hardware fitters

High quality Wera Micro screwdriver set for precision mechanical work. Ballpoint profile: the ballpoint drive profile means that it is possible to swivel the tool axis away from the screwdriving axis, thus enabling "round the corner" screwdriving. Rapid twisting is possible by fixing the hand on the twist cap and using the fast-turning zone just below it. This makes time-consuming grip adjustments unnecessary. Power zone with integrated soft zones ensure the transfer of higher tightening and loosening torque. Precision zone for the right angle for adjustment work. The Wera Black Point tip offers high corrosion protection and an exact fit.



Web link

https://products.wera.de/en/screwdrivers_series_kraftform_micro_2052_6.html

Wera - 2052/6
05118156001 - 4013288032065

Wera Werkzeuge GmbH
Korzter Straße 21-25
D-42349 Wuppertal
Tel: +49 (0)2 02 / 40 45-0
E-Mail: info@wera.de

Series Kraftform Micro

Kraftform Micro handle



Screwdriving jobs in electrical and precision engineering applications are often tedious and time-consuming. We learned from users what is important for them: working speeds, torque, precision - and we then focused particularly on these issues.



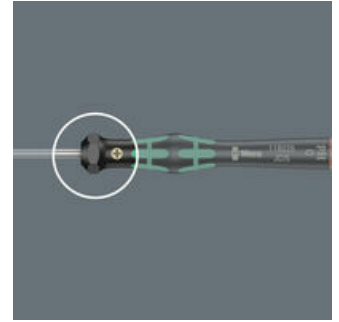
Multi-component screwdriver handle for ergonomic working.

The refined screwdriver for electronics technicians



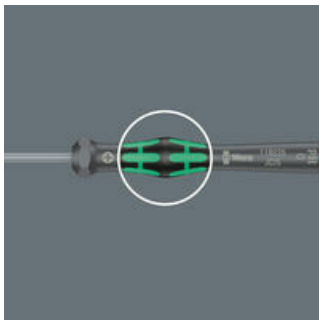
The Kraftform Micro, with its three zones and their specific arrangement, satisfies these requirements perfectly. The free-turning cap that provides support for the hand works with these advantages, enabling quick and easy precision work.

The precision zone



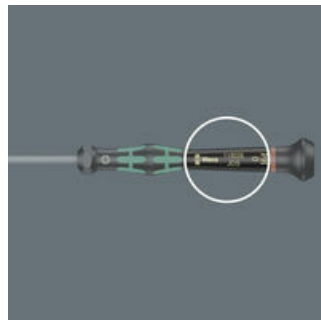
The precision zone directly above the blade gives the user a better feel for the right rotation angle during fine adjustment work.

The power zone



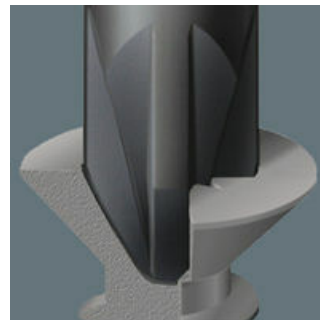
The power zone has integrated soft zones near the blade tip to ensure high torque transfer for loosening or tightening screws without losing contact with the screw.

The fast-turning zone



The fast-turning zone just below the rotating cap allows rapid twisting.

Wera Black Point tip



The Wera Black Point tip and a refined hardening process ensure long service life of the tip, improved corrosion protection and an exact fit.

Applications



Indispensable for many users, including electronics technicians, opticians, precision engineers, jewellers, EDP hardware fitters and model-makers

Web link

https://products.wera.de/en/screwdrivers_series_kraftform_micro_2052_6.html

Wera - 2052/6

05118156001 - 4013288032065

2052/6 Hexagon screwdriver set and rack for electronic applications, 6 pieces

Series Kraftform Micro



Set contents:

2052 Ball end hexagon screwdriver for electronic applications, 1.5 x 60 mm



05118090001	1x	1.5 x 60 mm
05118092001	1x	2 x 60 mm
05118094001	1x	2.5 x 60 mm
05118096001	1x	3 x 60 mm

2054 Screwdriver for hexagon socket screws for electronic applications, 0.9 x 40 mm



05118062001	1x	0.9 x 40 mm
05118064001	1x	1.3 x 40 mm

Web link

https://products.wera.de/en/screwdrivers_series_kraftform_micro_2052_6.html

Wera - 2052/6

05118156001 - 4013288032065

Wera Werkzeuge GmbH

Korzter Straße 21-25

D-42349 Wuppertal

Tel: +49 (0)2 02 / 40 45-0

E-Mail: info@wera.de